



# Hair Drug Test Kit<sup>®</sup>

## Hair sample collection procedure for toxicological analyses

### Content

of the DNAlogy Hair Drug Test Kit<sup>®</sup>

- ✓ Aluminum foil for sample transfer
- ✓ White envelope for sample storage
- ✓ Adhesive envelope seal
- ✓ Biological specimen transport bag
- ✓ Alcohol wipe

You will need: ✓ A pair of scissors (or a scalpel).



### Sampling Protocol



01 Clean the scissors with alcohol wipe.



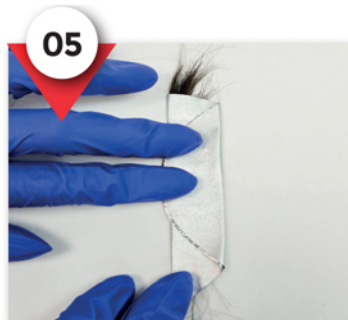
02 Separate a tuft of about 20-40 hair from the back top of the head and cut the tuft with scissors as close as possible to the root.



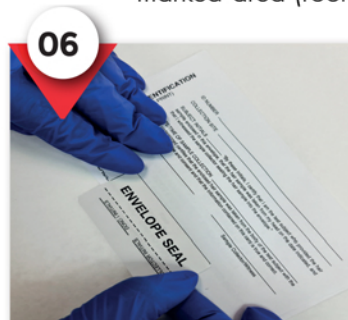
03 Repeat the process for 1-5 different parts of the head and then place all the tufts together making sure they are all in the same direction. Place the collected tufts in the aluminum foil making sure that the cut ends of each tuft are placed on the special marked area (root end).



04 Lay down the tuft along the center of the aluminum foil keeping the beginning of the tuft together at its edge.



05 Fold the aluminum foil in half and again lengthwise once more.



06 Place the aluminum foil inside the white envelope and seal it with the adhesive envelope seal.



07 Place the white envelope inside the biological specimen transport bag and seal it.

✓ Note: In case of body hair collection, it is not necessary to align the cut ends from a specific side.



## Useful information

### Sampling time

- Wait at least **7 days** from the last use to perform sampling.
- Wait at least **1 month** in case you want to find out if the person is not a user anymore.

### Sampling point – Sample size

- Keep samples at room temperature until delivery to the laboratory.
- Hair is preferably collected from the back top of the head.
- In order not to distort the appearance of the person, cut the tufts from different parts of the head and then place them all together.
- The sample length should not be shorter than 1 cm. If the hairs are longer than 12 cm you can use a rubber band or a thin rope to tie them at a distance of about 3 cm from the skin so that they stay together.
- There is no maximum length. Hair grows with an average speed of 1 cm/month. Each centimeter represents a period of use of 1 month. A tuft of 12 cm length represents a period of one year.
- If the person is bald, the sampling is done at the level of the neck.
- If head hair sampling is not possible, collect hair from other parts of the body (pubic, under arm, sternal, arm or beard hair).

**!** (**Caution:** Hair sampling from other parts of the body also provides information regarding past use but without accurate determination of the exact time period of consumption).